

### Filter Driers (Flare Solid Core)



SKY Part No.	Item Description	Lay-in length	Diameter	Capacity kW R-22/410A	Capacity kW R-404A	Capacity kW R-134a
300-032	1/4 MSAE	110	43	7	5	7
300-033	3/8 MSAE	121	43	19	13	17
300-052	1/4 MSAE	122	64	8	5	7
300-053	3/8 MSAE	132	64	19	14	18
300-082	1/4 MSAE	143	64	8	5	7
300-083	3/8 MSAE	152	64	21	14	19
300-084	1/2 MSAE	156	64	29	20	26
300-162	1/4 MSAE	157	78	8	5	7
300-163	3/8 MSAE	168	78	24	16	22
300-164	1/2 MSAE	175	78	33	22	30
300-165	5/8 MSAE	185	78	47	30	43
300-303	3/8 MSAE	250	78	23	15	21
300-304	1/2 MSAE	250	78	34	22	31
300-305	5/8 MSAE	258	78	49	33	45
300-306	3/4 MSAE	286	78	65	43	59
300-415	5/8 MSAE	258	90	54	37	52
300-416	3/4 MSAE	269	90	72	49	66

Manufactured in accordance with AS 2971, with a SWP of 4,200 kpa

- ✱ Solid core block of 100% molecular sieve, for the ultimate in moisture take up, speed, capacity and retention.
- ✱ Membrane filter element will remove and retain all harmful particles.
- ✱ Anti-corrosion powder coat finish with chrome flare connections offering increased service life.
- ✱ Solid copper connection on solder version.

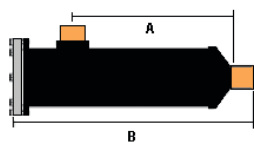
Liquid capacity calculated on: Evaporating temp: -15°C Condensing temp: 30°C  
pd: 7 kpa (1 psi)

### Filter Driers (Solder Solid Core)



SKY Part No.	Item Description	Lay-in length	Diameter	Capacity kW R-22/410A	Capacity kW R-404A	Capacity kW R-134a
301-032S	1/4 SOL	110	43	7	5	7
301-033S	3/6 SOL	112	43	7	5	7
301-052S	1/4 SOL	122	64	7	5	7
301-053S	3/8 SOL	122	64	7	5	7
301-082S	1/4 SOL	131	64	8	5	7
301-083S	3/8 SOL	135	64	21	14	19
301-084S	1/2 SOL	137	64	25	17	23
301-162S	1/4 SOL	156	78	24	16	22
301-163S	3/8 SOL	156	78	24	16	22
301-164S	1/2 SOL	156	78	33	22	30
301-165S	5/8 SOL	160	78	47	30	43
301-304S	1/2 SOL	236	78	34	22	31
301-305S	5/8 SOL	238	78	49	33	45
301-306S	3/4 SOL	238	78	65	43	59
301-307S	7/8 SOL	241	78	65	43	59
301-417S	7/8 SOL	252	90	99	65	92
301-419S	1 1/8 SOL	254	90	99	65	92

## Accessible Filter & Driers Shells Std (CO2 on request)



SKY Part No.	Item Description	Connection	Lay-in A	Length - B
302-1401	1 Core - 7/8 SOL	7/8	140	240
302-1801	1 Core - 1-1/8 SOL	1 1/8	140	240
302-1802	2 Core - 1-1/8 SOL	1 1/8	280	390
302-2201	1 Core - 1-3/8 SOL	1 3/8	140	240
302-2202	2 Core - 1-3/8 SOL	1 3/8	280	390
302-2203	3 Core - 1-3/8 SOL	1 3/8	424	536
302-2601	1 Core - 1-5/8 SOL	1 5/8	140	240
302-2602	2 Core - 1-5/8 SOL	1 5/8	280	390
302-2603	3 Core - 1-5/8 SOL	1 5/8	424	536
302-2604	4 Core - 1-5/8 SOL	1 5/8	567	685
302-3401	1 Core - 2-1/8 SOL	2 1/8	140	240
302-3402	2 Core - 2-1/8 SOL	2 1/8	280	390
302-3403	3 Core - 2-1/8 SOL	2 1/8	424	536
302-3404	4 Core - 2-1/8 SOL	2 1/8	567	685
302-4202	2 Core - 2-5/8 SOL	2 5/8	280	390
302-4203	3 Core - 2-5/8 SOL	2 5/8	424	536
302-4204	4 Core - 2-5/8 SOL	2 5/8	567	685
302-4802	2 Core - 3 SOL	3	280	390
310-6401	1 Core - 4 SOL/WELD	4	150	310

Manufactured in accordance with AS 2971, with a SWP of 4,200 kpa

- ✦ The ultimate in accessible drier shells, able to handle the high pressures of R-410a std, CO2 upgradeable.
- ✦ Double plated steel end plate with stainless steel bolts for extended service life.
- ✦ Anti-corrosion powder coat finish with solid copper connections for ease of installation and increased service life.
- ✦ Featuring a large secondary mesh filter enabling particular removal with minimal pd.

## Accessible Filter & Driers Capacity



SKY Part No.	Liquid kW R-22/R-407C	Liquid kW R-134A	Liquid kW R-404A	Liquid kW R-22/410A	Suction kW R-22/R-410A	Suction kW R-404A	Suction kW R-134a
302-1401	100	158	140	38	13	10	
302-1801	135	210	188	51	17	13	
302-1802	155	240	218	58	20	15	
302-2201	165	260	226	63	22	17	
302-2202	212	328	296	79	27	20	
302-2601	165	260	230	63	22	17	
302-3401	227	262	323	63	22	17	
302-3402	260	398	358	95	32	24	
302-3403	280	425	390	92	31	23	
302-3404	330	510	460	122	41	31	
302-4202	360	398	358	95	32	24	
302-4203	390	425	390	92	31	23	
302-4204	460	510	460	112	41	23	
302-4802	358	398	358	95	32	24	
310-6401	262	403	354	98	34	28	

Liquid capacity calculated on:  
 Evaporating temp: -15°C  
 Condensing temp: 30°C  
 pd: 7 kpa (1 psi)

Suction capacity calculated on:  
 Evaporating temp: 4.4°C  
 Condensing temp: 32°C  
 pd: 7 kpa (1 psi)

## Bi-Flow Filter Driers



SKY Part No.	Connection	Lay-in length	Diameter	Capacity kW R-22/407C	Capacity kW R-410A	Capacity kW R-134a
304-082	1/4 MSAE	145	65	4.1	4.1	3.7
304-083	3/8 MSAE	155	65	8	8	7.4
304-084	1/2 MSAE	163	65	8.9	8.9	8
304-163	3/8 MSAE	169	78	18.9	18.9	17
304-164	1/2 MSAE	177	78	30	30	27
304-165	5/8 MSAE	185	78	38.5	38.5	34.6
304-082S	1/4 SOL	116	65	4.1	4.1	3.7
304-083S	3/8 SOL	120	65	8	8	7.4
304-084S	1/2 SOL	122	65	8.9	8.9	8
304-163S	3/8 SOL	134	78	18.9	18.9	17
304-164S	1/2 SOL	134	78	30	30	27
304-165S	5/8 SOL	134	78	38.5	38.5	34.6
304-167S	7/8 SOL	134	81	41.8	43.1	37.8
304-307S	7/8 SOL	238	90.2	51.3	52.8	47.1

Manufactured in accordance with AS 2971, with a SWP of 4,200 kpa

- ✱ Solid core block of 100% molecular sieve, for the ultimate in moisture take up, speed, capacity and retention.
- ✱ Membrane filter elements in both directions will remove and retain all harmful particles.
- ✱ SKY bi-flow driers feature a multi-valve low pd design with hyperextension supports offering extended service life.
- ✱ Anti-corrosion powder coat finish with chrome flare connections for increased service life.

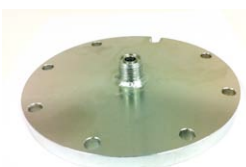


## Accessible Shell Spares

SKY Part No.	Item Description
302-inter-1	Internal carrier (1 core)
302-Inter-2	Internal carrier (2 core)
302-Inter-3	Internal carrier (3 core)
302-Inter-4	Internal carrier (4 core)

Liquid capacity calculated on:  
 Evaporating temp: -15°C  
 Condensing temp: 30°C  
 pd: 7 kpa (1 psi)

## Drier Cores



SKY Part No.	Item Description	Core Composition	Interchangeable Upgrade For
305-1	Standard Core - All round Clean Up (not recommended for POE oil)	80%MS/20%AL	48-DN, PCK-48, 3049-1, RC-4864
305-2	Ultra Dry Core - High Moisture Removal	100%MS Ideal for POE oil	48-DU, Z-48, 3050-1, RCW-40, UK-48
305-3	Burn-Out Core - Superior Acid Removal	60%MS/35%AL /5%AC	DA-48, RC-4864-HH,3051-1, PCK-48_HH, W-48
305-4	Suction Filter Element - Low pressure drop	Particle Removal Element	PRE-48BD, 3052-2, F48R, VS48F, F-48
305-5	Gasket Set - End Plate		
305-6	Accessible Drier Bracket		
305-7	SHigh Capacity Core -100 series	100%MS Ideal for POE oil	3050-100
305-8	Filter Element - Low Pressure Drop 100 series	Particle Removal Element	
305-9	Top Plate Alu.c/w 1/4 NPT Centre Hole		
305-16	End plate with 3/4 R/L Socket		

## Burnout Clean-up Filter Driers (Solid Core)



SKY Part No.	Connection	Lay-in length	Diameter	Capacity kW R-22/410A	Capacity kW R-404A	Capacity kW R-134A
303-083	3/8 MSAE - Dual Access	146	64	6	4.5	3.5
303-163	3/8 MSAE - Dual Access	170	78	13	8	5.5
303-164	1/2 MSAE - Dual Access	177	78	15	8.5	6
303-165	5/8 MSAE - Dual Access	186	78	20	13	9.5
303-305	5/8 MSAE - Dual Access	259	78	18	15	12.5
303-306	3/4 MSAE - Dual Access	238	78	22	19	14
303-083S	3/8 SOL - Dual Access	146	64	6	4.5	3.5
303-163S	3/8 SOL - Dual Access	159	78	15	8.5	6
303-164S	1/2 SOL - Dual Access	162	78	15	8.5	6
303-165S	5/8 SOL - Dual Access	160	78	20	13	9.5
303-306S	3/4 SOL - Dual Access	239	78	22	19	14
303-307S	7/8 SOL - Dual Access	245	78	26	22	16
303-309S	1-1/8 SOL - Dual Access	245	78	31	27	20

## Pancake



SKY Part No.	Connection	Lay-in length	Diameter	Capacity kW R-22/410A	Capacity kW R-404A	Capacity kW R-134A
303P-405S	5/8 ID - Dual Access	108	88	18	16	13
303P-406S	3/4 ID - Dual Access	108	88	21	20	17
303P-407S	7/8 ID - Dual Access	108	88	24	20	17
303P-409S	1-1/8 ID - Dual Access	118	88	28	24	21

Manufactured in accordance with AS 2971, with a SWP of 3,200 kpa

- ✿ Solid core block of 60% MS/ 35% AL/ 5% AC, for the ultimate in acid, wax and moisture take-up, capacity and retention
- ✿ Membrane filter element will remove and retain all harmful particles.
- ✿ Anti-corrosion powder coat finish with chrome flare or solid copper connections, for ease of installation and increased service life.
- ✿ Dual access ports to monitor pd and contaminant take up.